

[BE:]

SPACE FOR EXCHANGE AND  
DEVELOPMENT

## ABOUT US

[BE:] is an interdisciplinary space that provides a platform for development, presentation, and exchange.

In addition to our own program of workshops, exhibitions, and experimental formats, we create space for external projects. The space can be used flexibly—for events, courses, showrooms, presentations, conferences, or collaborative processes.

We welcome exciting ideas, projects, and collaborations and see [BE:] as an open space for new perspectives and collaborative work.



[WWW.BE-SCHUETZENVEREIN.COM](http://WWW.BE-SCHUETZENVEREIN.COM)  
[WWW.BE-RESEARCH.DE](http://WWW.BE-RESEARCH.DE)



# OBJECT

The approximately 40 m<sup>2</sup> room is ideal for a variety of uses, such as seminars, workshops, exhibitions, fashion brand presentations, conferences, or pop-up events. Its open layout and large windows create a bright, inviting atmosphere and offer flexible design options.

## **Amenities:**

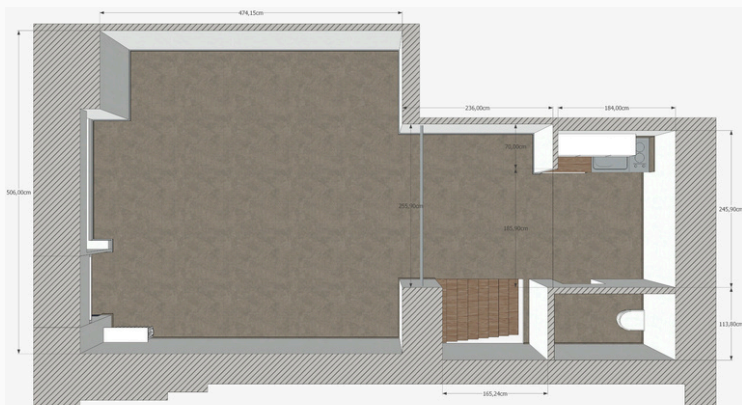
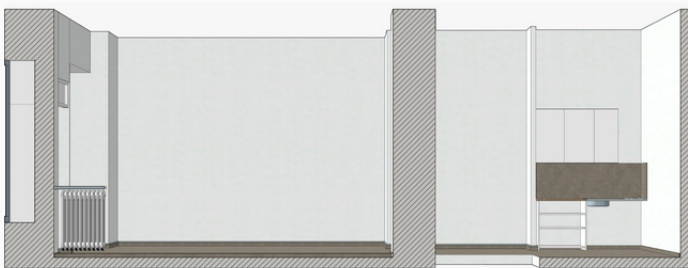
The room can be furnished with tables and chairs as needed and can be adapted to different event concepts. Technical equipment includes Wi-Fi, presentation equipment (e.g., a projector), and a basic sound system.

## **Extras:**

A small kitchen with a coffee machine, refrigerator, and basic kitchenware, as well as a restroom, are available.

## **Accessibility:**

The location boasts excellent public transport connections. The U7 and U4 subway lines, several bus lines, and the S-Bahn (suburban train) ring line are all within easy walking distance.



# AREA

Attractive retail space in the popular Akazienkiez neighborhood of Schöneberg: The approximately 40 m<sup>2</sup> shop boasts a large window front and high visibility on Martin-Luther-Straße, near the flea market at Schöneberg Town Hall.

The location around Bayerischer Platz in Schöneberg is characterized by its central, well-connected location and vibrant, diverse neighborhood.

The immediate proximity to Schöneberg Town Hall lends the area special historical and social significance.

Thanks to its excellent public transport connections and the mix of residential areas, educational institutions, and cultural offerings, the location provides ideal conditions for reaching a broad public. Projects and events can be easily accessible here and embedded in an open, urban context.



# OUR RANGE

**Day-Deal:** 190 Euro

**Week-Deal:** 1300 Euro

**Weekend Deal Friday-Sunday:** 480 Euro

**Deposit:** 300 Euro

**Cleaning:** 30 Euro

Note: All prices quoted include additional costs, plus statutory VAT where applicable. This offer is non-binding and subject to change.

The available space comprises approximately 40 m<sup>2</sup> and is ideally suited for pop-up stores, workshops, exhibitions, or small events. The area boasts a large window front, bright rooms, and flexible usage options.

Tables and chairs, as well as basic technical equipment (e.g., Wi-Fi), are available upon request.

A small kitchenette with a coffee machine, refrigerator, and basic supplies, along with a restroom, is also provided, ensuring comfortable use even for extended periods.

The location offers excellent public transport connections (U7, U4, S-Bahn, Ringbahn, and bus), making the space easily accessible for guests and clients.

Bayerischer Platz / Eisenacher Str.  
Schöneberg Town Hall

[BE:]

Martin-Lutherstr. 78

10825 Berlin

Email: [contact@be-research.de](mailto:contact@be-research.de)

Tel.: 01577 95 93 919

Buchungswebsite: [www.be-schuetzenverein.com/be](http://www.be-schuetzenverein.com/be)